



# NEWSLETTER

## Team Talk

The 2022/23 Season has officially kicked off and we are delighted to welcome you all back to Wellsborough Road.

Just a quick reminder about all the preparation a coach needs to carry out to ensure the players can have matches. Aside from planning and running the training, each coach has to arrange the games with the opposition, contact the referee, report the results by text and then through the FA system (all within strict timescales), ensure the pitch is marked up beforehand, setting up the goals, flags and barriers (also taking them down again) and of course do their best to ensure all players enjoy every aspect. Please help them by letting them know player availability well in advance and also, no coach will ever turn down the offer of assistance (anything from helping with the set up and taking down and even more is always fully appreciated) 😊

Dale - MBFC Club Secretary

Contact us - [marketbosworthfc@gmail.com](mailto:marketbosworthfc@gmail.com)



Over the Summer the club struggled to come to terms with the tragic loss of Freddie. We will be paying tribute to Freddie in a number of ways going forward. Starting with all new MBFC kits carrying the #bemorefreddie emblem and throughout September, all MBFC home games will have a minutes silence. If you would like to make a donation to the Bodie Hodges Foundation in Freddie's Memory: <https://www.justgiving.com/fundraising/FreddieOrton>



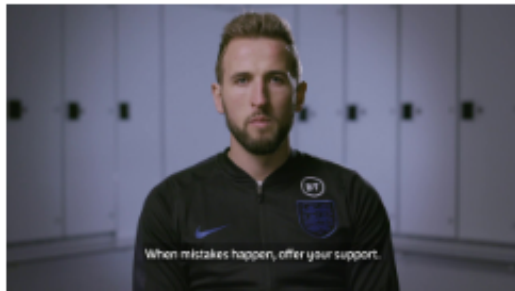
#bemorefreddie



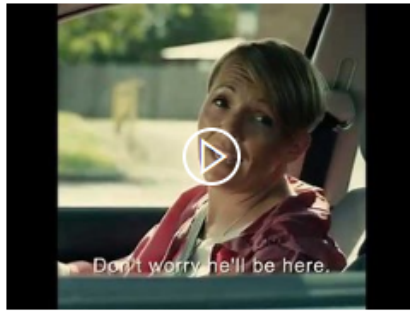
## MEMBER & SUPPORTER EVENINGS

Thanks to those who attended and allowed us to share more about the club ethos, our plans for the future and how we look after all our players' welfare. If you weren't able to join us we showed three short videos which really capture the power and responsibility that parents and supporters have in bringing positivity to the game.

FA Respect  
Pledge of Positivity



Respect: We Only  
Do Positive



My Magic Sports Kit



## WINTER TRAINING

Will return to the Dixie all weather floodlit pitches after half term for Winter training. Full details of training times will be shared by your coaches shortly.

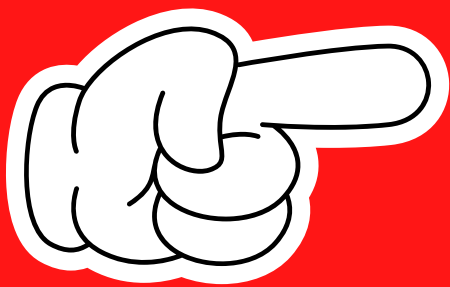
Dates for your  
Diary

# Fantastic news

Our Adults Team is now up and running in the Leicestershire County League with their first match played at home on September 24th. It was a close run thing with plenty of opportunities and lots of positives to take away. We still need a few more players so get in touch with Ethan: 07542 671895 or Ollie: 07484 311868 if you fancy dusting off your boots on a Saturday afternoon?



# YOUR CLUB NEEDS YOU..



## WE ARE CURRENTLY LOOKING FOR...

### WELFARE OFFICER

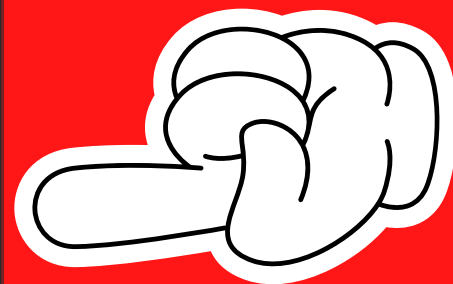
Nic Tolley our Welfare Officer is stepping down at the end of this season as his son finishes his junior career at MBFC to concentrate on refereeing. This is a vital role in any Junior Community Football Club. If you are interested in finding out more about what is involved please do get in touch for a no obligation chat:



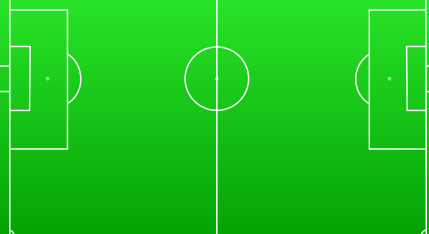
## WE ARE CURRENTLY LOOKING FOR...

### TREASURER

Our Community Amateur Sports Club needs a new treasurer as our existing volunteer is stepping down. You need to be good with numbers, able to help us complete annual returns and accounts. Be able to liaise with our club leads and authorise expenditure alongside supporting us to manage both grant and earned income.



## PITCH PERFECT



You will notice a slightly new layout to our pitches this year in order to meet the escalating size demands. As our players get bigger so do the pitches! We now have 3 x 7 aside pitches available (when 11 asides are not in use). The grants we receive mean we can't make wholesale changes so we have juggled them around to make optimum use of space. The recent rain will only help improve the pitches.

## 2022/23 Subscriptions

All members should now have received a renewal reminder or new subscription set up details. If you haven't already made payment please do log in and set up this up now. Subs are vital to the running of the club and are reinvested in kits, goals, referee fees and winter training. Coaches will be following up directly in October as subs become overdue. Thank you <https://webcollect.org.uk/mbfc>